



wBridge

WATCHMAN DOOR



wBridge

USER MANUAL

FOR INDIVIDUALS



**WATCHMAN
DOOR**

Declaration under Article 10(10) of Directive 2014/53/EU

To whom it may concern,

We, Watchman Door SL, wish to declare that the wBridge model radio equipment may be operated in all EU member states without any restrictions on commissioning or authorisation requirements for use.

Radio frequency specifications:

- Operating frequency band(s): 2400-2483.5MHz
- RF output power: + 4.0dBm (max)
- Potencia de salida RF: + 4.0dBm (max)



Index

¿What is the wBridge?.....	3
Technical specifications	3
LED Specifications.....	4
¿How to install the wBridge?.....	5
Installation of the wBridge with the Watchman Door App ...	6
Add wBridge to the App	6
¿How to do the action with wBridge?	9
¿How to do the action with linked devices?	10
¿How to give access to another user?	12
Recommendations for use.....	13
FCC	15

¿What is the wBridge?

wBridge is a smart plug that works with Wi-Fi and Bluetooth.

Its function is to remotely operate Watchman Door devices and the internal relay to activate/deactivate the circulation of the Watchman Door.

This device incorporates:

- Connectivity Wi-Fi de 2.4Ghz.
- Connectivity Bluetooth Low Energy to link to other Watchman Door devices and set up Wi-Fi.

The wBridge device supports up to 10 linked devices and is prepared for 230VAC 50/60Hz power supply.

Technical specifications


Especificación	Parámetro	Medida
Electrónica	Entrada	230VAC, 50/60HZ
	Salida	230VAC, 16A máx
	Temperatura de funcionamiento	0 °C~ 40 °C (32°F ~ 104°F)
	Humedad	0%~95% (Sin condensación)
Wi-Fi	Frecuencia	2.4GHz-2.5Ghz (2400MHz-2483.5MHz)
	Protocolo	802.11 b/g/n
	Potencia de transmisión	13dB@802.11n; 18.5dB@802.11b
Bluetooth	Estándar de Bluetooth	Bluetooth 4.2
	Distancia máxima de conexión	130 metros en espacio abierto
	Capacidad de escaneo	Máximo de 30 dispositivos por BLE
	Sensibilidad de recepción	-97dB

LED Specifications

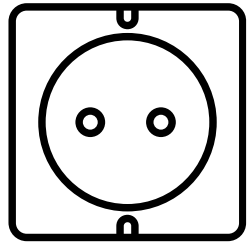
If the LED is yellow  is because it is trying to connect to the Wi-Fi network.

Once the device has been able to connect to the network, the LED will turn green.  .

In case it fails to connect to the network, the LED will turn red. .

Pressing the button for 5 seconds will change the LED to blue , the user can set or modify the Wi-Fi network of his device from the App.

¿How to install the wBridge?



To install the wBridge connect it to an AC outlet with a voltage between 220V-230VAC and make sure you have the Watchman Door Home application installed on your mobile phone.

Installing the wBridge with Watchman Door App

Once the wBridge is physically installed, you must initiate its functionality by following a pairing process through the Watchman Door Home app. This app is available for iOS and Android, and can be downloaded by scanning the following QR codes:

Download the App
for Android



Download the App
for iOS

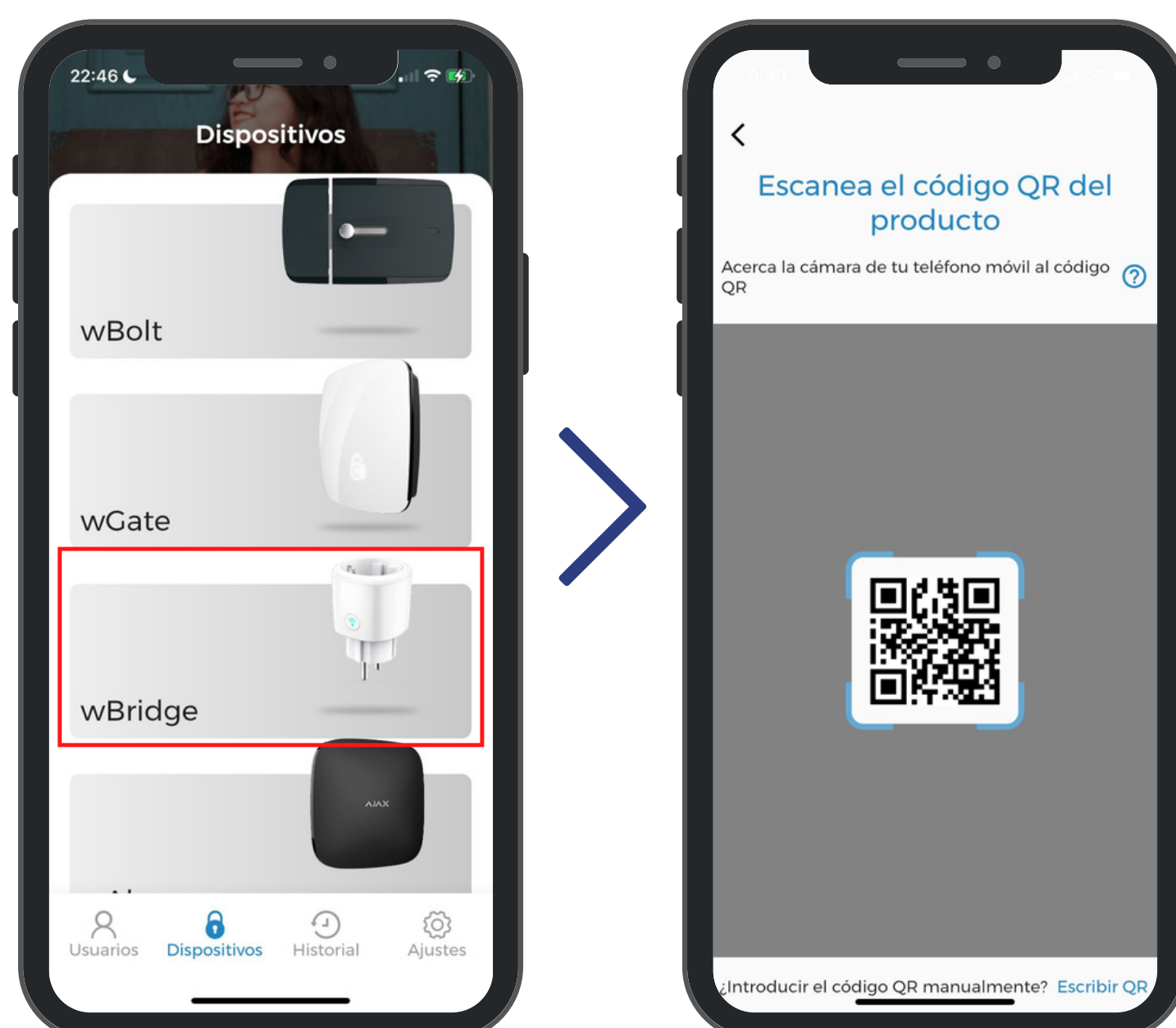


Add wBridge to the App

Once the application has been installed, you must register. You then need to scan the QR code that is embedded in the wBridge with its serial number. To do this, choose one of two options:

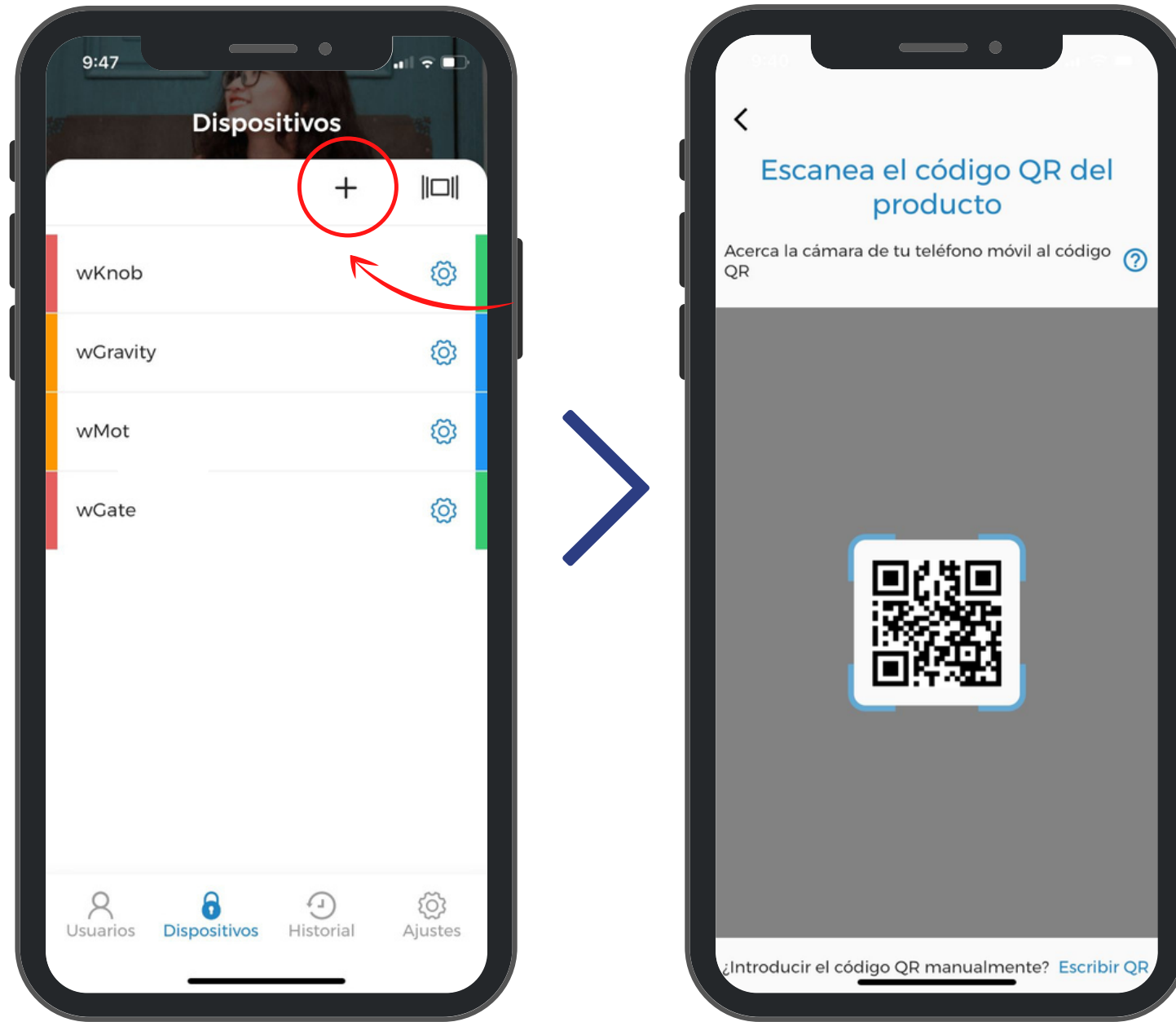
1) If you do not have any Watchman Door device installed:

Click on the device you want to install (wBridge) and it will automatically open the camera to scan the QR code. The App will ask for permission to access the camera.



2) If you already have a Watchman Door device installed:

Click on the '+' sign and the camera will automatically open to scan the QR code. The App will ask for permission to access the camera.



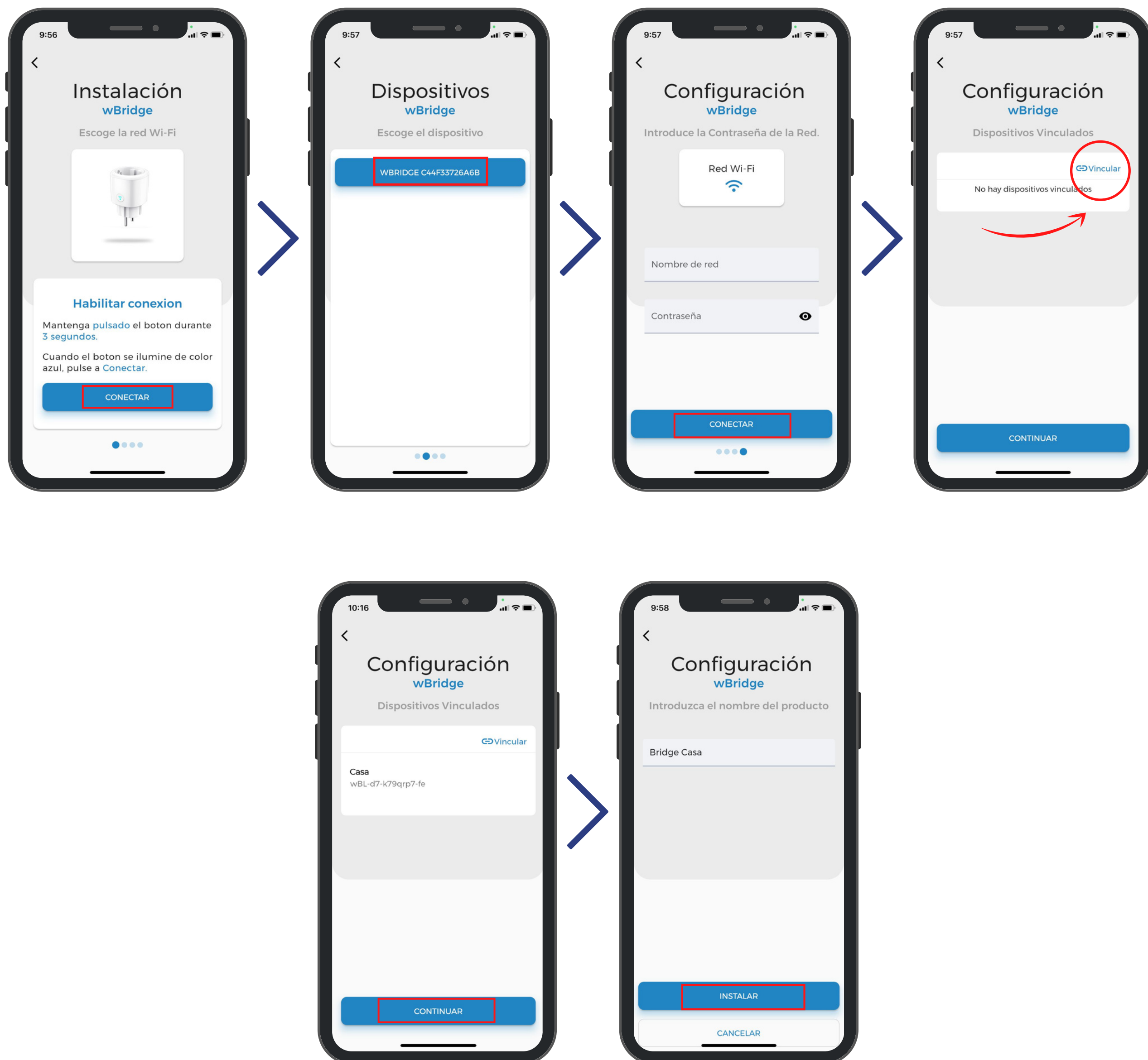
Once the QR code has been scanned, the Enable connection screen will appear, where you must press the button for 5 seconds and once the led changes colour to blue you must press 'Connect'.

Then a list of devices will appear where you will have to select the bridge. Once selected, you will have to enter the wifi network and its password.

Once the configuration is complete you will be shown the Link devices screen, click on 'Link'. In the screen that will open, select the devices you want to link to the wBridge. Once selected, click 'OK'.

Finally, you must enter the name you want to give to the wBridge in order to identify it.

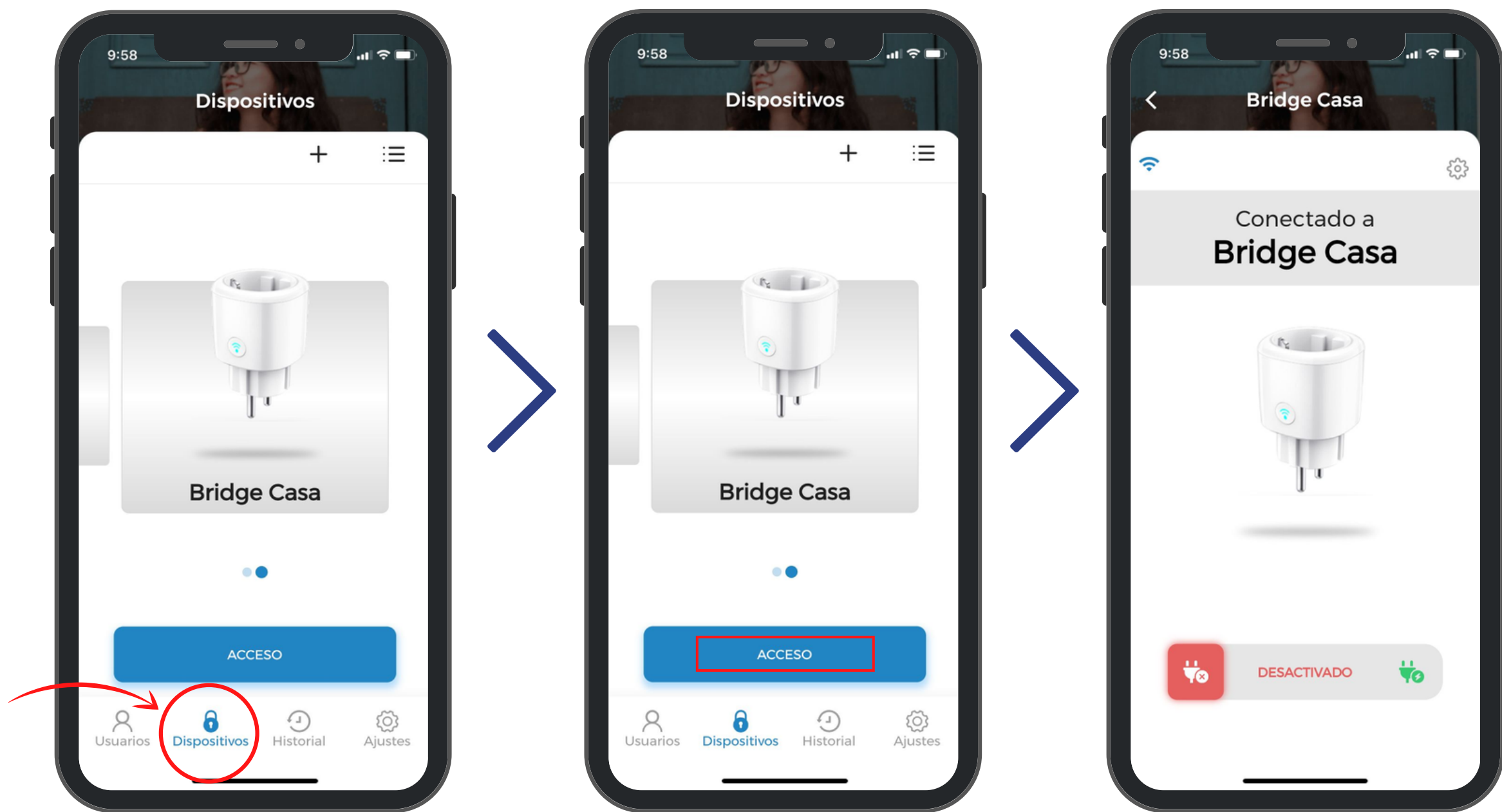
Click on 'Install' and the wBridge will be correctly added to the App.



How to do the action with the wBridge?

Under 'Devices' in the bottom menu of the App you will see your newly installed device, selecting it will connect you to it.

By clicking on 'Access', you will be connected to the wBridge where you can activate by swiping to the left or deactivate by swiping to the right.

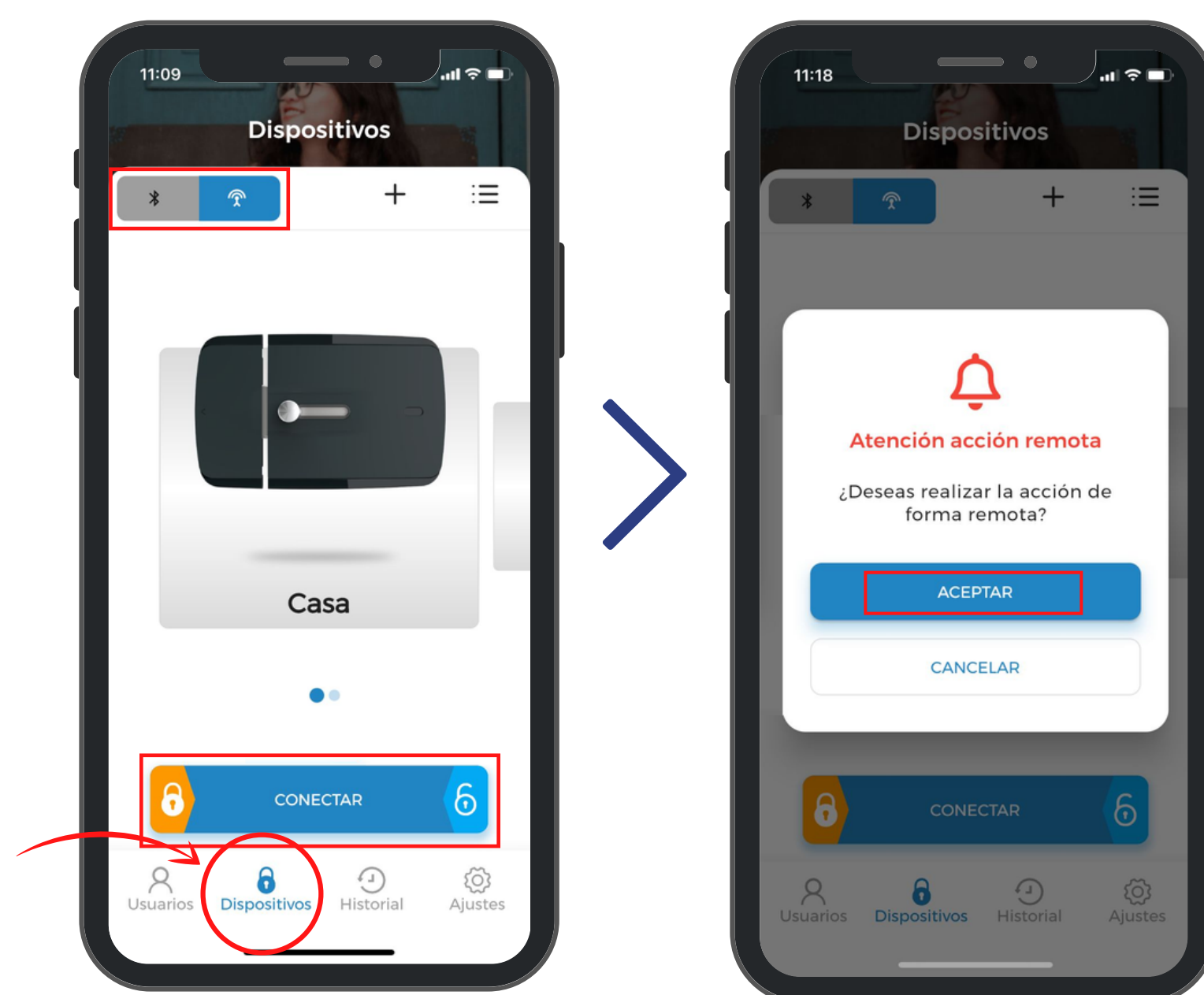


How to do the action with linked devices?

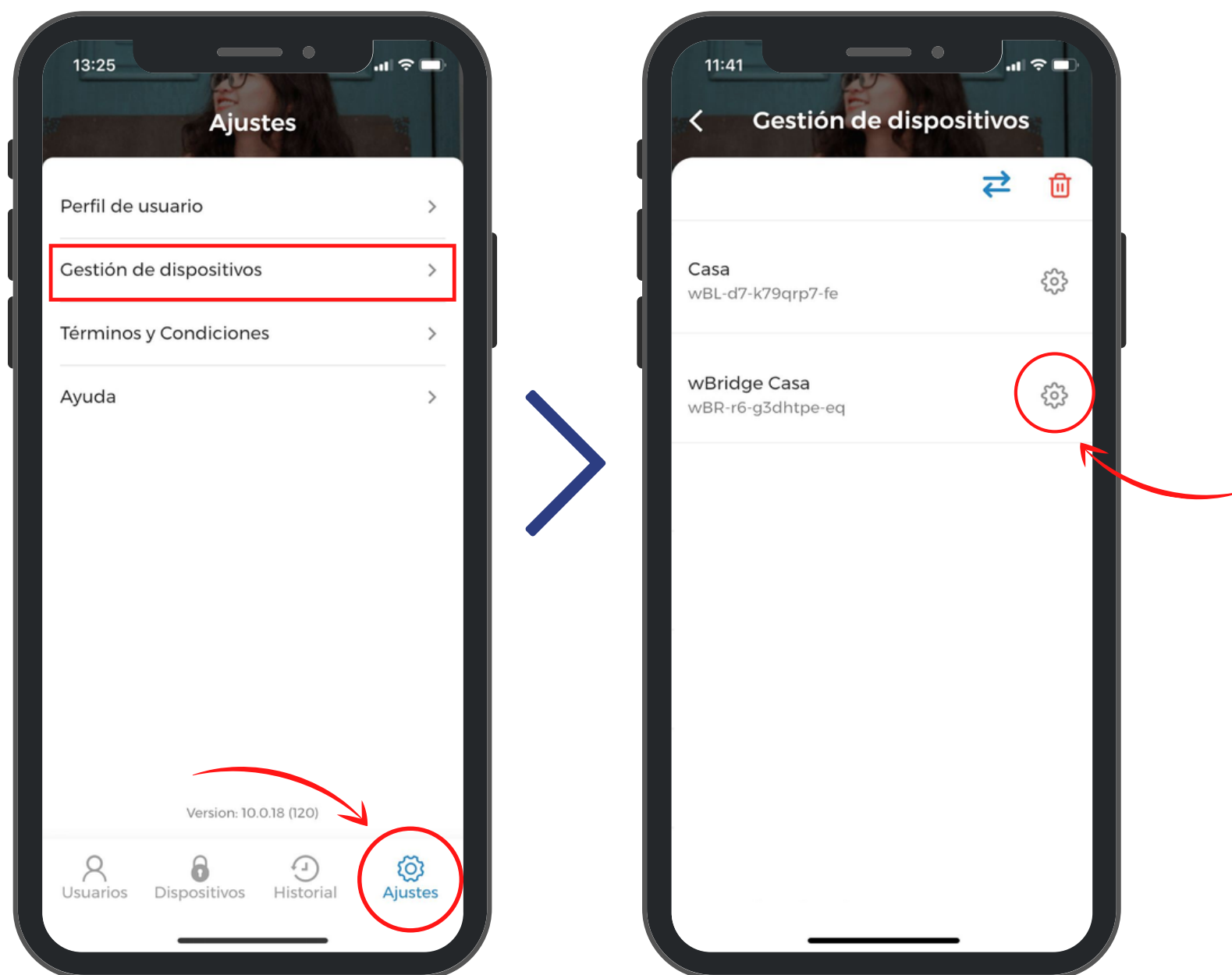
In the 'Devices' menu, products that are linked to the wBridge will have the option to choose between remote action or via Bluetooth.

The way to perform the remote action with the linked devices, for example, the 'wBolt' smart lock, will be by swiping left to open or by swiping right to close.

When you perform an action, you will be shown a prompt to confirm that you want to perform the action remotely and when you accept it, you will receive a notification on your mobile phone that the action has been confirmed..

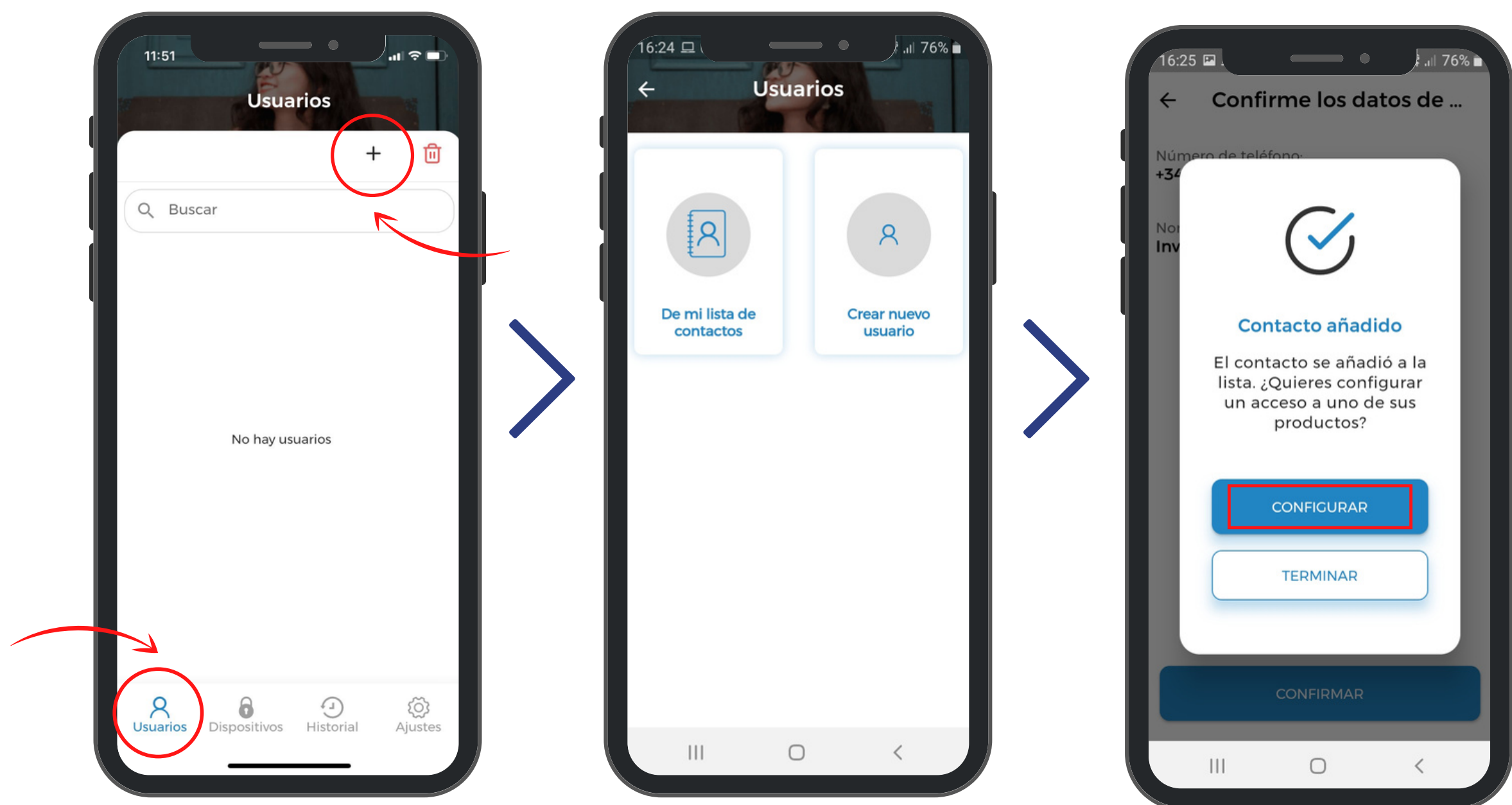


If at any time you wish to change the configuration of the wBridge or any of the devices linked to it, you can do so in the 'Settings' section of the bottom menu of the App. Then click on 'Device management' and select the desired device to make the changes. You must be connected to the product to be able to do this.

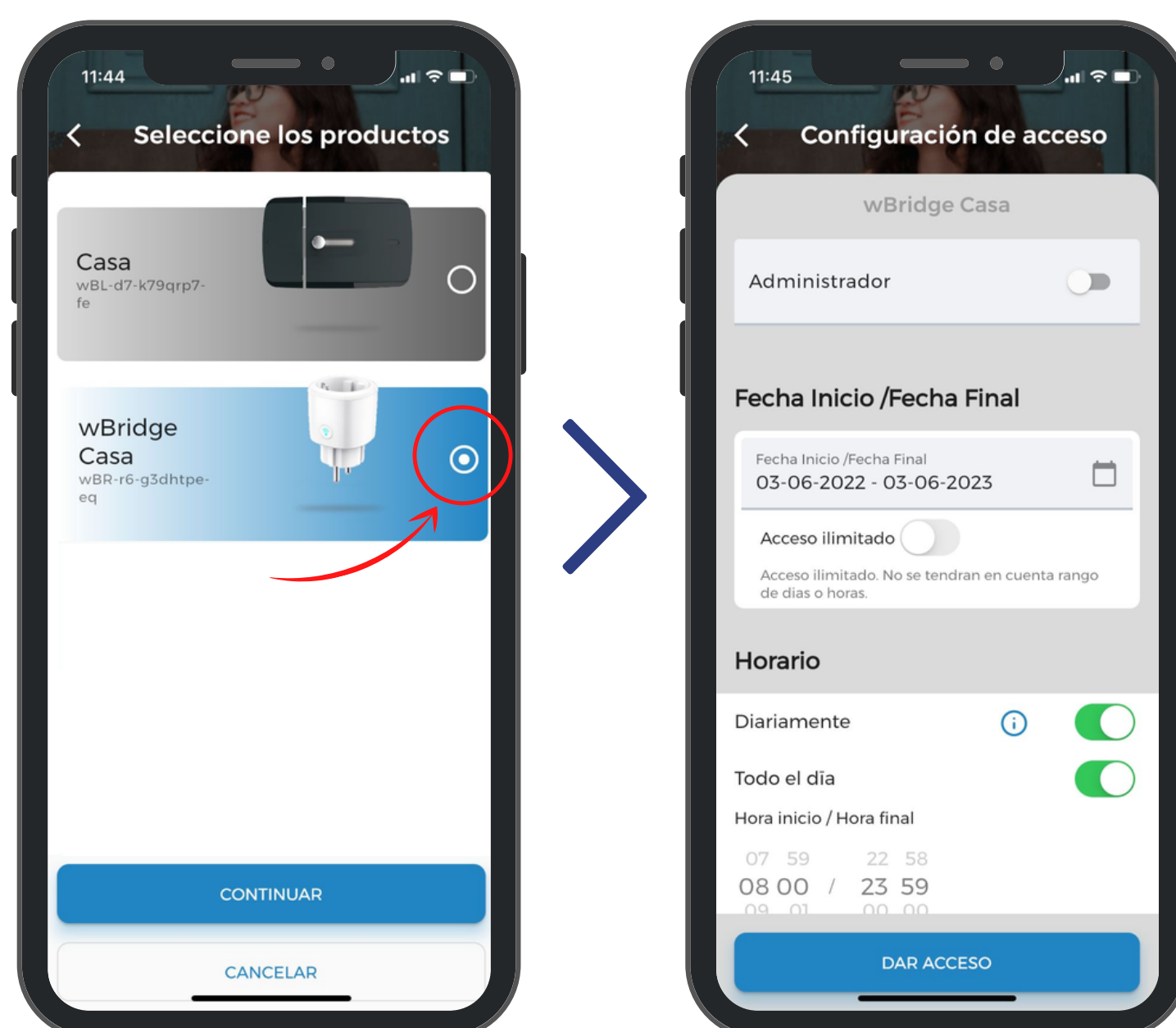


How to give access to another user?

In order for another user to be able to perform the action with the wBridge or one of the linked devices, you must first give them access to the product. To do this, go to the 'Users' section in the bottom menu of the App and click on the '+' sign. Here you can choose the user contact you want to add from your contact list or create a new user.



On the screen that will appear when you click on 'Configure', you will be able to choose the device to which you want to give access and the different configuration features of the granted access.



Recommendations for use

For the correct functioning of the wBridge product it is necessary to fulfil a series of requirements. If these requirements are not fulfilled, the company will not be held responsible for any malfunctioning of the Watchman Door device.

Environmental conditions:

Operating temperature: 0 - 40 [°C].

Maximum ambient humidity 95%, non-condensing. It is very important that the product is installed indoors without receiving extreme direct sunlight.

It is not a submersible device and has no protection against water, so if for any reason it gets wet, immediately remove it from the power supply and once dry check its operation.

Improper handling of the device may cause damage.

Do not expose the product to open flames or extreme heat.

Installation Conditions:

Install the device as described in the instructions, failure to follow the steps in the instructions may result in malfunction of the product.

Do not install the electronic plug next to flammable materials.

Make sure that the installation is correct.

Safety Instructions:

The following safety and risk instructions not only serve to protect the device, but also to safeguard your health.

the device but also to safeguard your health.

Be sure to purchase the product from a Watchman Door certified point of purchase.

Watchman Door, if you do not buy the product from an authorised point of purchase, it may be a non-original product or you may not benefit from the Warranty in case you need it.

Clean the surface of the electronic plug with a soft, clean and dry cloth to avoid possible damage and corrosion. Do not clean with water, alcohol or other chemicals.

The device must be plugged in to the correct specification [230VAC, 50/60HZ].

Elimination:

Never disassemble the body of the electronic plug, disassembling the housing will void the warranty of the device.



Do not dispose of the device in household waste. Electronic devices must be disposed of via local collection points so that their components can be treated correctly and in accordance with regulations.



This product contains small parts that can be swallowed. Keep away from children under 36 months. This product is not a toy.

FCC

This device complies with Part 15 of the FCC Rules. Operation is subject to the following two conditions: (1) this device may not cause harmful interference, and (2) this device must accept any interference received, including interference that may cause undesired operation.

FCC Caution:

Changes or modifications not expressly approved by the party responsible for compliance could void the user's authority to operate the equipment.

FCC Statement:

"This equipment has been tested and found to comply with the limits for a Class B digital device, pursuant to part 15 of the FCC Rules. These limits are designed to provide reasonable protection against harmful interference in a residential installation. This equipment generates, uses and can radiate radio frequency energy and, if not installed and used in accordance with the instructions, may cause harmful interference to radio communications. However, there is no guarantee that interference will not occur in a particular installation. If this equipment does cause harmful interference to radio or television reception, which can be determined by turning the equipment off and on, the user is encouraged to try to correct the interference by one or more of the following measures:

- Reorient or relocate the receiving antenna.
- Increase the separation between the equipment and receiver.
- Connect the equipment into an outlet on a circuit different from that to which the receiver is connected.
- Consult the dealer or an experienced radio/TV technician for help.

Declaration RSS-Gen and RSS-210:

This device complies with Industry Canada licence-exempt RSS standard(s).

Operation is subject to the following two conditions: (1) this device may not cause interference, and (2) this device must accept any interference, including interference that may cause undesired operation of the device.

This device complies with the CNR d'Industrie Canada applicable to licence-exempt radio apparatus.



+34 937 378 104
info@watchman.es
www.watchmandoor.com
C/ Comadrán, 39 Nave 3 - Pol. Ind. Can Salvatella
Barberà del Vallès - Barcelona - España

